

A microscopic view of water droplets of various sizes scattered across a light-colored background. In the top-left corner, the curved rim of a glass is visible, with some droplets on its surface. A thin vertical red line is positioned to the left of the main text.

Resins synthesis installations

- PRR Reactors
- 
- A solid red rectangular box is located in the lower right quadrant of the page, partially overlapping the text area.

Reactors Resins Installations

PRR

The technically advanced Reactors are the heart of resins synthesis installations. PROFARB offers complete installations for the synthesis of all kinds of resins.

OPERATION:

The Reactor's drive is located in the central axis of the vessel. The electric motor is equipped with steeples revs adjustment in full range. The rotational speed is transferred onto the shaft through a reducer.

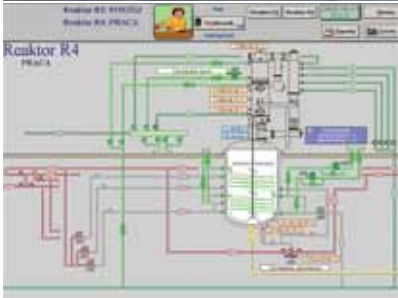
The vessel is heated/cooled with D-tubes and an internal coil.

The Reactors are adapted to heating/cooling with thermal oil. Steam heating is also available.

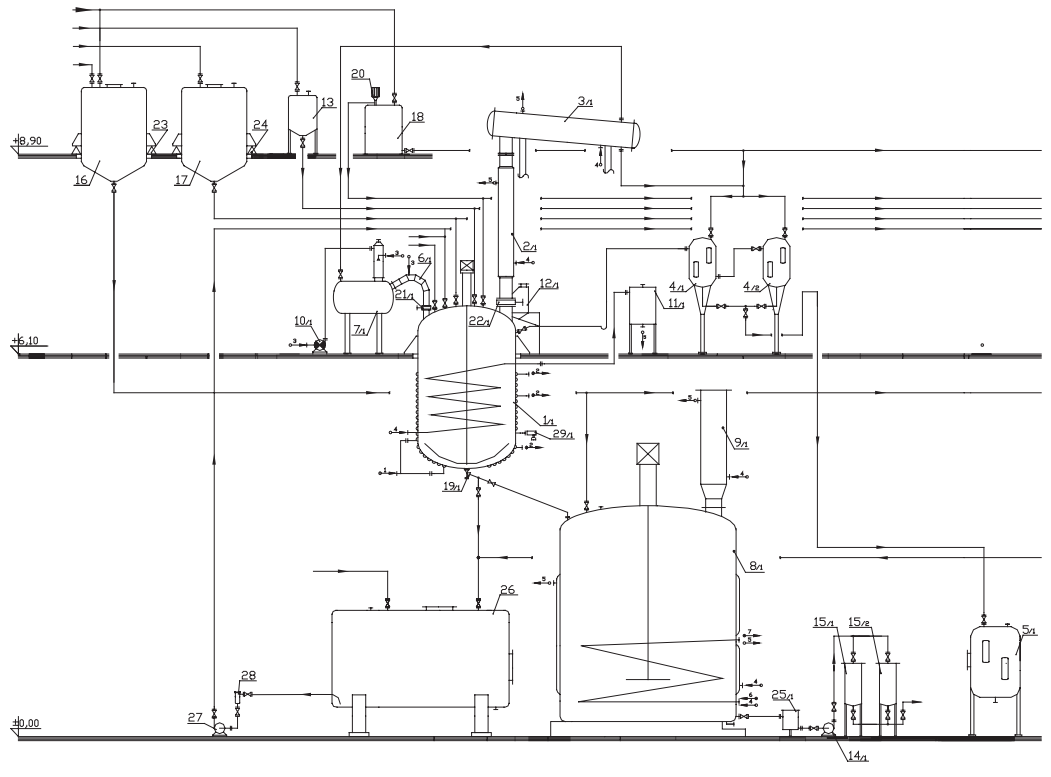
APPLICATION:

The PRR Reactors can be used for the production of the following resins:

- dispersions - acrylic, PCV,
- alkyd,
- alkyd modified,
- polyester,
- amino,
- phenolic,
- maleic,
- epoxy,
- polyisocyanate.



Complete resin synthesis installation with oil heating. Fully automatic.



TECHNICAL SPECIFICATIONS:

model	working capacity (m ³)	working pressure	main motor power (kW)	main motor power (HP)	agitator rotation (rpm)	diameter x height (mm)	total weight (kg)
PRR-1000/7,5F	1	90% of vaccum	7.5	10,1	0÷112	Ø 1200x3400	1200
PRR-3000/11F	3	90% of vaccum	11	14,8	12÷120	Ø 1400	2000
PRR-5000/18,5B	5	90% of vaccum	18.5	24,8	12÷86	Ø1800x5150	2900
PRR-10000/45F	10	90% of vaccum	45	60,3	0÷80	Ø 2400x6000	5630
PRR-15000/75F	15	90% of vaccum	75	100,6	0÷76	Ø 2600x7450	6100

OPTIONS:

- complete plants consisting of:
 - resin synthesis installation:
 - reactors,
 - condensing systems,
 - scrubbing systems,
 - raw material feeding systems,
 - thinning-down vessels,
 - fully automatic process control,
 - heating stations for oil (electric, gas, oil), cooling and vacuum equipment, cleaning installations,
- CE and ROSSTEST certificates,
- machine can be adapted for the EX explosive environment operation (European ATEX certificate and Russian GOZGORTECHNADZOR certificate).