

# Auxiliary machines

- PDC Dust Collectors
- PHP Hydraulic Presses / PTU Tilters
- PPF / PGF Pumping & Filtration units/Filters
- PMV Mobile Vessels

# Dust Collectors

PDC

The PDC Dust Collectors are designed to extract solid particles from the air. Due to the filtration process, the air is clean and dust free. Filtration efficiency is high, up to 100%.

## OPERATION:

Charged air is drawn into the filtration chamber. Inside the chamber, the air passes through a filtration fabric spread on a rectangular frame and becomes clean.

The negative pressure is generated by a fan located on the filter or detached. The filtration fabric regeneration system is an important part of the collector. Regeneration is carried out continuously with a pulse of compressed air blown on the filtration fabric in the opposite direction to the filtered air. The dust is collected in the storage bin underneath the filter.

## APPLICATION:

The PDC Dust Collectors are used in many industries, particularly in facilities where the production process creates a lot of dust. Typical locations of dust collectors are charging, discharging and transportation of loose materials, surface cutting, grinding and cleaning operations.

The filter environment temperature range may vary from -20°C to +60°C.



*The PDC Dust Collectors provide dust free feeding of the materials to be dispersed. 100% filtration efficiency.*



# Hydraulic Presses

PHP

## Tilters

PTU

The Hydraulic Press is used for pressure vessel discharging of high viscosity products. The Hydraulic Press significantly decreases the duration of vessel discharging and ensures a clean process.

The Vessel Tilter is an economic alternative of the Hydraulic Press.

### OPERATION:

#### The Press

A piston installed on the piston rod of the hydraulic servo is located inside the frame that moves on slideways fixed to vertical pillars.

The hydraulic unit presses oil into the hydraulic servo causing the piston rod to move up or down. The piston moving up lifts an arm with the vessel to the highest position. In this position, the frame is blocked with special bolts and the piston slowly enters the vessel, pressing its surface against the mass located in the vessel. The pressure created enables a mass outflow through the discharge drain to a given container. Discharging can be processed through a semi-automatic filling station PFS.

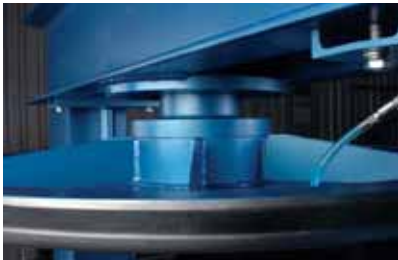
#### The Tilter

The lifted vessel is tilted. This causes gravity vessel discharging.

### APPLICATION:

The PHP Hydraulic Press and PTU Tilters can be used for the production of:

- plasters,
- putties,
- adhesives,
- silicones.



*The Hydraulic Press enables quick and complete vessel discharging. This process can be connected to product packaging.*



## TECHNICAL SPECIFICATIONS: Presses PHP

model	compatible vessel volume (ltrs)	compatible machine	pressure of extruded media [max] (MPa)	hydraulic unit electric motor power (kW)	L x W x H (mm)	total weight (kg)
PHP-250	250	PWD	0.6	3.0	1900x1000x4000	1400
PHP-450	450	PMD-DISPERMIX	0.6	3.0	1900x1000x4000	1500
PHP-800	800	PMD-BUTTERFLY	0.4	3.0	2100x1000x4550	2120

## Tilters PTU

model	compatible vessel volume (ltrs)	compatible machine	hydraulic unit electric motor power (kW)	L x W x H (mm)	total weight (kg)
PTU-450	450	PMD-DISPERMIX	1.5	1600x500x4500	600

## OPTIONS:

- the hydraulic press can be fitted to the dissolver vessel,
- the hydraulic press can be connected to liquid materials dosing stations (PDS) for non-flowing components dosing,
- semi automatic filling station PFS/250, PFS/450, PFS/800,
- CE and ROSSTEST certificates,
- machine can be adapted for the EX explosive environment operation (European ATEX certificate and Russian GOZGORTECHNADZOR certificate),

# Pumping & Filtration Units

PPF/PGF

The Pumping & Filtration Units are designed for the simultaneous pumping and filtration of liquid materials, particularly paint before packaging. The unit is fixed on the trailer which facilitates transportation and use in the area where the unit is required.

## OPERATION:

The Pumping & Filtration Unit operates on a pressure filtration basis. The liquid under pressure is centrally directed from the top or side to a bag filter. This method of liquid feeding enables even loading and filtration area use, as well it prevents flow disturbances. Special handles enable quick and easy replacement of the filter bag. Depending on the type, the Pumping & Filtration Unit is equipped with a gear pump, screw pump or pneumatic pump.

The filter housing is made of stainless steel.

The filter is compatible with filtration systems of many manufacturers.

## APPLICATION:

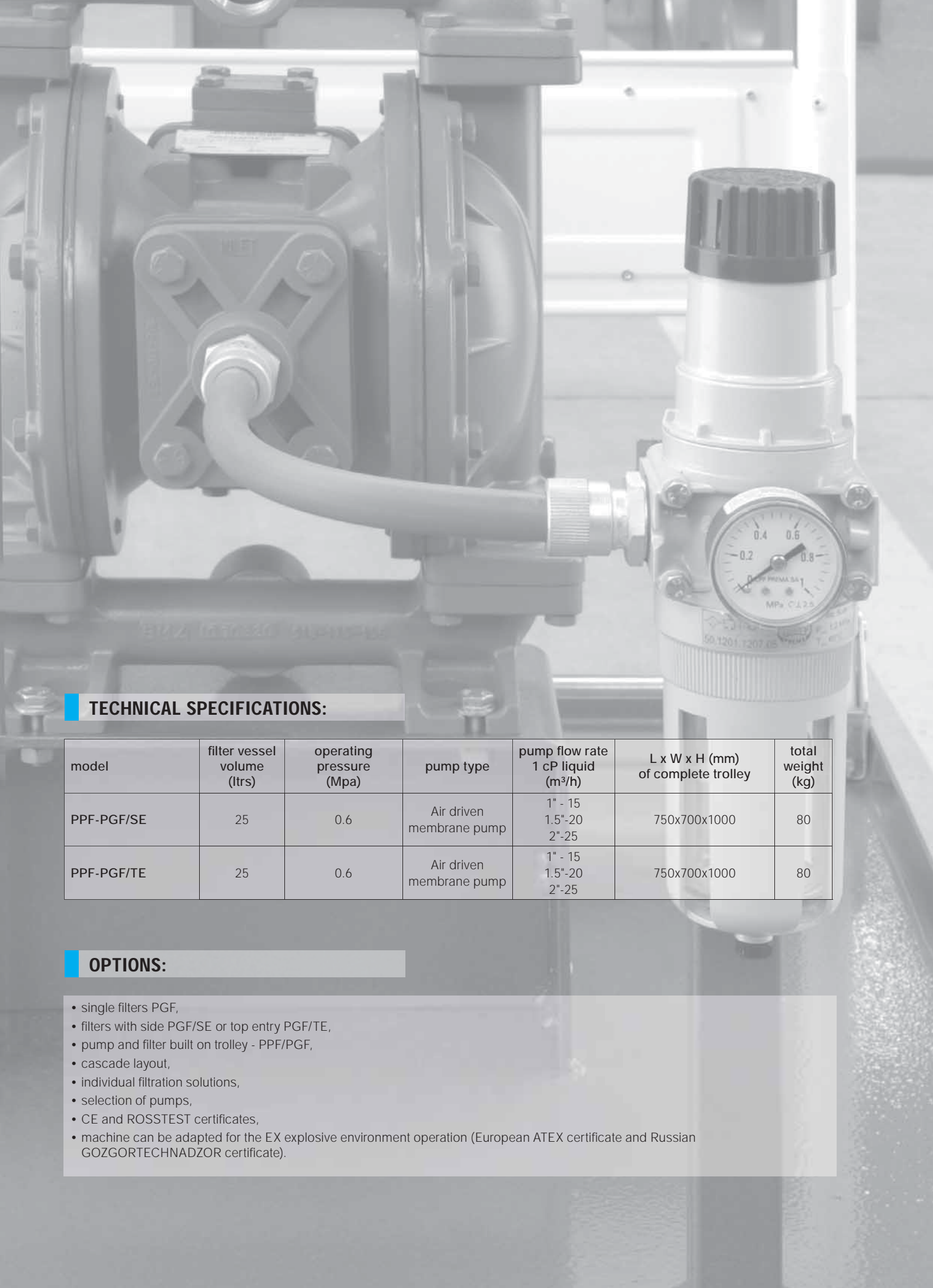
The Pumping & Filtration Units can be used in every industry. Our applications include the filtration of:

- coatings
- technological water,
- cooling water,
- contaminated water,
- mineral, vegetable and animal oils,
- hydraulic oils,
- cosmetics,
- petroleum products,
- acid and base solutions,
- resins, paints and varnish,
- sugar syrup,
- beer and other alcohol beverages,
- juices and beverages,
- photographic emulsions and liquids,
- pharmaceutical industry semi- and finished products.



*The unit is mounted onto a trailer which facilitates transportation and use in the area where the unit is required.*





### TECHNICAL SPECIFICATIONS:

model	filter vessel volume (ltrs)	operating pressure (Mpa)	pump type	pump flow rate 1 cP liquid (m <sup>3</sup> /h)	L x W x H (mm) of complete trolley	total weight (kg)
PPF-PGF/SE	25	0.6	Air driven membrane pump	1" - 15 1.5"-20 2"-25	750x700x1000	80
PPF-PGF/TE	25	0.6	Air driven membrane pump	1" - 15 1.5"-20 2"-25	750x700x1000	80

### OPTIONS:

- single filters PGF,
- filters with side PGF/SE or top entry PGF/TE,
- pump and filter built on trolley - PPF/PGF,
- cascade layout,
- individual filtration solutions,
- selection of pumps,
- CE and ROSSTEST certificates,
- machine can be adapted for the EX explosive environment operation (European ATEX certificate and Russian GOZGORTECHNADZOR certificate).

# Mobile process vessels

PMV

PMV Mobile process vessels are compatible with all machines manufactured by PROFARB - Dissolvers, Mills, Mixers, Hydraulic Presses and Dosing stations PDS.

## OPERATION:

The vessels are made of stainless steel which ensures the purity of the materials coming in contact with different substances.

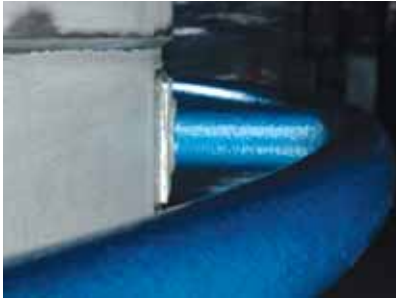
The vessels are equipped with discharging connections.

The vessels are also equipped with turning and straight wheels, and may also be delivered on legs, adapted for forklifts.

## APPLICATION:

The PMV Mobile Vessels are compatible with:

- mixers,
- dissolvers,
- mills,
- hydraulic presses,
- dosing stations.



*High quality of materials.  
The vessels are compatible  
with every production  
machine.*

## TECHNICAL SPECIFICATIONS:

model	working capacity (ltrs)	diameter (mm)	height (with wheels) (mm)	total weight (kg)
PMV-50	50	410	640	30
PMV-100	100	500	740	37
PMV-200	200	700	895	72
PMV-250	250	750	830	75
PMV-250/R	250	750	830	170
PMV-450/R	450	900	1000	380
PMV-500	500	955	1150	130
PMV-800/R	800	1090	1380	216
PMV-1000	1000	1200	1250	175
PMV-1500	1500	1350	1300	242

## OPTIONS:

- pressure cooling/heating jacket, PMV/CP,
- non-pressure cooling/heating jacket, PMV/CN,
- reinforcement for hydraulic press, PMV/R,
- vacuum type, PMV/V,
- special designs,
- lids.